

diabla

ROMERO & VALLEJO

PLOID

MESA AUXILIAR - SIDE TABLE

PT08759

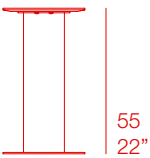


MATERIALES - MATERIALS

Fabricado con estructura aluminio termolacado texturizado. Sobre de la mesa de fenólico.

Made of textured thermo-lacquered aluminium structure. Phenolic plate.

DATOS TÉCNICOS - TECHNICAL DATA



3,50 kg - 7,70 lbs
0,85 m³ - 3,00 ft³



Ø30
12"

MAINTENANCE - MANTENIMIENTO

Ver apartado de limpieza y mantenimiento: www.diablaoutdoor.com

See cleaning and maintenance section: www.diablaoutdoor.com

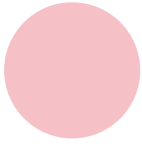
diabla

COLORES - COLOURS

Estructura. Frame



Blanco
White



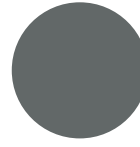
Rosa
Pink



Rojo
Red



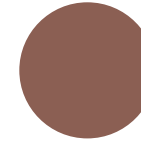
Gris
Grey



Antracita
Anthracite



Arena
Sand

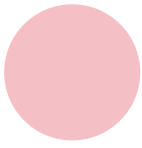


Bronce
Bronze

Fenólico. Phenolic



Blanco
White



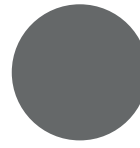
Rosa
Pink



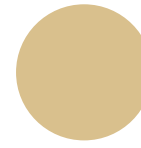
Rojo
Red



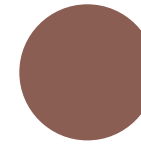
Gris
Grey



Antracita
Anthracite



Arena
Sand



Bronce
Bronze

